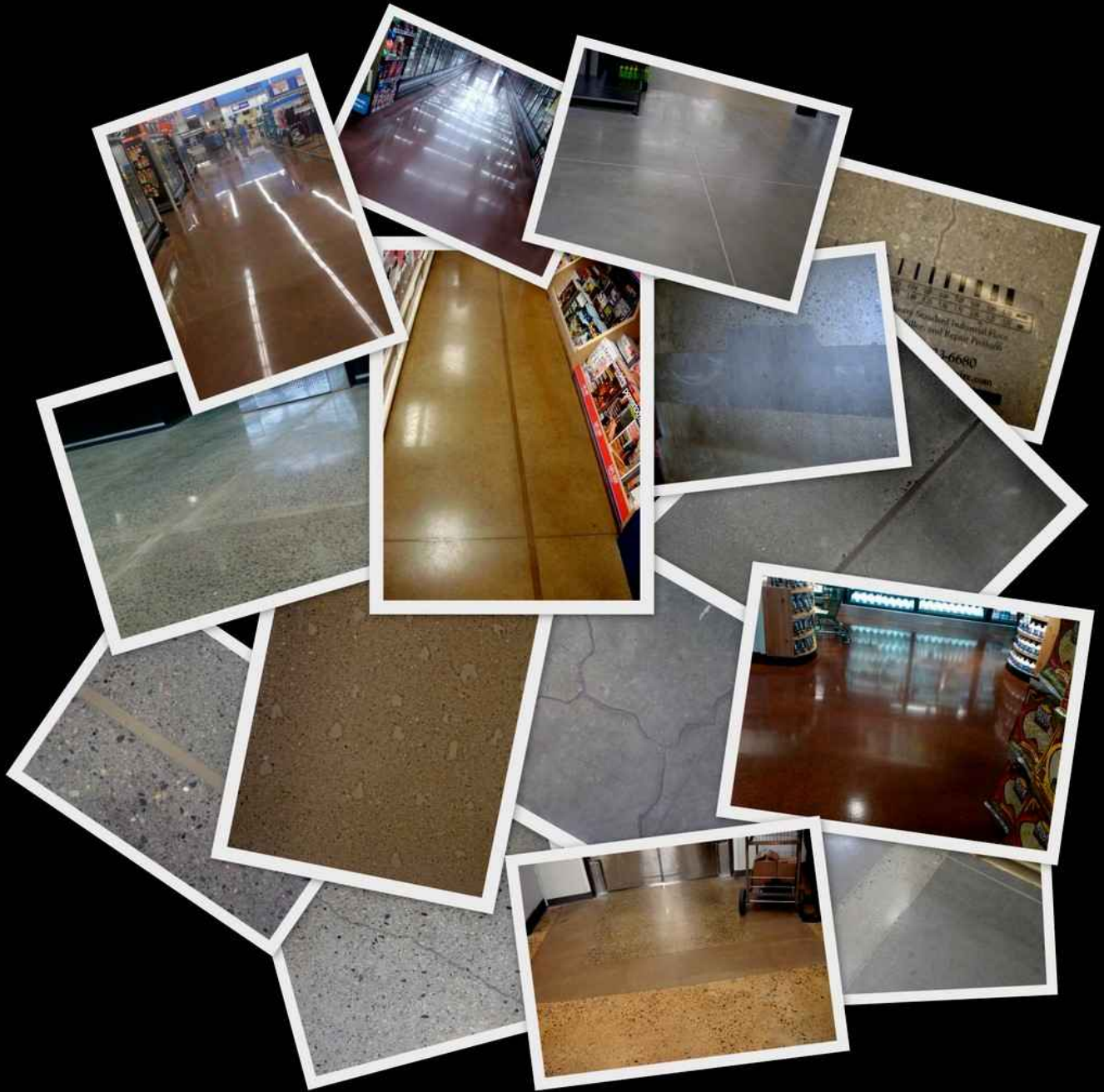


# JOINT FILLERS & RAPID-SET REPAIR SYSTEMS FOR CONCRETE FLOORS



**METZGER/McGUIRE**

INDUSTRY STANDARD INDUSTRIAL FLOOR JOINT FILLERS & REPAIR PRODUCTS

# FLOOR JOINT FILLERS FOR CONCRETE FLOORS

For more than 45 years, Metzger/McGuire has been the world leader in concrete floor joint protection systems. From MM-80, the industry's first and widely acknowledged industry standard heavy-duty epoxy joint filler, to the cutting edge Spal-Pro and Edge-Pro lines of rapid-setting polyurea joint fillers, you can rely on Metzger/McGuire joint fillers to provide superior joint edge protection and to enhance the long term durability of your industrial or retail floor.

PRODUCT													
	NEW CONSTRUCTION		NEW CONSTRUCTION		NEW CONSTR./REPAIR		NEW CONSTR./REPAIR			NEW CONSTR./REPAIR		NEW CONSTR./REPAIR	
APPLICATION RANGE	Ambient	Cooler	Ambient	Cooler	Ambient	Cooler	Ambient	Cooler	Freezer	Ambient		Ambient	Cooler
PRODUCT DESCRIPTION	Rapid-Set Semi-Rigid Polyurea Joint Sealant		Moderate-Duty Semi-Rigid Polyurea Joint Filler		Rapid-Set Semi-Rigid Polyurea Joint Filler		Low-Temp Semi-Rigid Polyurea Joint Filler			Heavy-Duty Semi-Rigid Epoxy Joint Filler		Heavy-Duty Semi-Rigid Polyurea Joint Filler	
TYPICAL USES	Seal control and construction joints in retail and commercial concrete floors. Repair active cracks exceeding 1/8" in width.		Fill and protect joints in exposed concrete retail floors and in moderate-duty warehouse concrete floors.		Fill or repair control and construction joints in industrial and retail concrete floors. Repair active cracks exceeding 1/8" in width.		Fill and protect joints in freezer/cooler or ambient concrete floors subject to hard wheels and heavy loads.			Fill and protect joints in heavy duty industrial concrete floors subjected to frequent and demanding traffic. Repair joint deterioration.		Fill and protect joints in heavy duty industrial concrete floors subjected to frequent and demanding traffic. Repair joint deterioration.	
SHORE HARDNESS	A 64-69		A 80-81		A 86-90		A 88-94			A 90-95		A 90-92	
TENSILE STRENGTH	393 psi		505 psi		970 psi		930 psi			1200 psi		920 psi	
TENSILE ELONGATION	162%		152%		180%		170%			80-90%		238%	
ADHESION TO CONCRETE	350-400 psi		350-400 psi		350-400 psi		350-400 psi			300-350 psi		300-350 psi	
APPLICATION METHOD	Dual Pump or Cartridge		Dual Pump or Cartridge		Dual Pump or Cartridge		Dual Pump or Cartridge			Dual Pump or Hand Mix		Dual Pump or Cartridge	
POT LIFE	NA-No Hand Mix		NA-No Hand Mix		NA-No Hand Mix		NA-No Hand Mix			10-15 minutes		NA-No Hand Mix	
TACK FREE AT 70°F	10-15 minutes		3 minutes		5 minutes		30 minutes (at 32° F)			5 hours		10-15 minutes	
FULL TRAFFIC READY	30-60 minutes		1 hour		1 hour		3-5 hours (at 32° F)			8-12 hours		45 minutes	
COLORFAST	Yes		Yes		Yes		No			No		Yes	
MIX RATIO	1:1 by Volume		1:1 by Volume		1:1 by Volume		1:1 by Volume			1:1 by Volume		1:1 by Volume	
AVAILABLE PACKAGING	600 ml dual cartridge 10 gallon unit		600 ml dual cartridge 10 gallon unit		600 ml dual cartridge 10 gallon unit		1500 ml dual cartridge 10 gallon unit			1 gallon unit (MM-80) 10 gallon unit		600 ml dual cartridge 10 gallon unit	

**When it comes to concrete floor joint fillers and repair products, "standard gray" is no longer the only color standard...**



# RAPID SET CONCRETE FLOOR REPAIR PRODUCTS

No one offers more innovative and durable repair solutions for industrial and polished concrete floors than Metzger/McGuire. Our rapid-setting repair products offer unequalled long-term durability with fast access times, thus ensuring minimal interruption to facility operations. All Metzger/McGuire products are 100% solids with no/minimal odor for safe and hassle free installation in all types of facilities.

			 LEED V4			 LEED V4			 LEED V4											
REPAIR			REPAIR			REPAIR			REPAIR			REPAIR			REPAIR					
Ambient	Cooler	Freezer	Ambient			Ambient	Cooler	Ambient	Cooler	Ambient	Cooler	Ambient	Ambient	Cooler						
Rapid-Set Semi-Rigid Polyurea Joint Polymer			Rapid-Set Surface Restoration Poylmer			Fast-Set Low Viscosity Surface Repair Product			Fast-Set Low Viscosity Structural Repair Product			Fast-Set Extended Pot Life Structural Repair Product			Early-Set Structural Epoxy Mortar			Quick-Set Multi-Temp Structural Epoxy Mortar		
Repair control/construction joints and cracks in ambient or freezer/cooler concrete floors.			Fill/repair concrete floor surface imperfections such as air holes, popouts, surface pitting, scratches and gouges, etc.			Structurally repair concrete Fill/repair concrete floor surface imperfections such as air holes, popouts, surface pitting, scratches and gouges, etc.			Structurally repair concrete surface defects, including popouts, gouges, nail holes, etc. Repair static cracks less than 1/8" wide.			Repair surface defects in industrial or stained/polished concrete floors including surface spalls/popouts, surface pitting, bolt-holes, random cracks and more.			Early-set system designed specifically for the repair of industrial concrete floors. Rebuild joint edges or repair large surface defects.			Rebuild/repair control and construction joints in industrial and retail concrete floors. Repair large surface defects.		
A 95-100			D 70-75			D 70-75			D 70-75			D 75-80			D 86+			D 92		
2850 psi			4184 psi			5100 psi			5500 psi			4300 psi			1400 psi			2000 psi		
Not Tested			2.8%			7-9%			6-8%			14-18%			NA			NA		
350 psi			Concrete Fails			Concrete Fails			Concrete Fails			Concrete Fails			Concrete Fails			Concrete Fails		
Dual Pump or Cartridge			Hand Mix			Cartridge			Cartridge			Hand Mix			Hand Mix			Hand Mix		
NA-No Hand Mix			5 minutes			1-1½ minutes			NA-No Hand Mix			3½-4 minutes			30-40 minutes			12-15 minutes		
3-5 minutes			20-30 minutes			15 minutes			5-8 minutes			5-8 minutes			3-4 hours			1 hour		
30 minutes			1 hour			45 minutes			15-30 minutes			60-120 minutes			4-8 hours			2-4 hours		
No			Yes			Yes			Yes			Yes			No			No		
2:1 by Volume			1:1 by Volume			1:1 by Volume			1:1 by Volume			1:1 by Volume			4:1 by Volume			5:1 by Volume		
450 & 900 ml dual cartridge 15 gallon unit			2 gallon unit 10 gallon unit			1500 ml dual cartridge			600 ml dual cartridge 250 ml universal cartridge			2 gallon unit 10 gallon unit			540 cubic inch kit (2.3 gallons)			300 cubic inch kit (1.3 gallons) Liquids only: 1 gallon unit and 30 gallon unit		

With the increased use of integral colors, stains and polishing on concrete floors, concrete has gone from being a simple, utilitarian gray work surface to a canvas of creativity. Exposed, decorative concrete is rapidly replacing traditional floor coverings as a cost-effective and earth friendly alternative work and showroom surface. Today's floors demand the availability of joint fillers and repair products in a range of colors to both protect and enhance the floor, while offering cost-effective and durable solutions. Metzger/McGuire's ColorFast line is the perfect solution when aesthetics are just as important as durability and longevity.

# APPROXIMATE MATERIAL COVERAGE RATES & CONVERSIONS

## Narrow Joints and Cracks

1/8 x 3/4" = 200 lf/gal.	3/16 x 3/4" = 135 lf/gal.	1/4 x 3/4" = 100 lf/gal.
1/8 x 1" = 150 lf/gal.	3/16 x 1" = 100 lf/gal.	1/4 x 1" = 80 lf/gal.
1/8 x 1-1/4" = 125 lf/gal.	3/16 x 1-1/4" = 85 lf/gal.	1/4 x 1-1/4" = 60 lf/gal.
1/8 x 1-1/2" = 100 lf/gal.	3/16 x 1-1/2" = 70 lf/gal.	1/4 x 1-1/2" = 50 lf/gal.
1/8 x 1-3/4" = 85 lf/gal.	3/16 x 1-3/4" = 60 lf/gal.	1/4 x 1-3/4" = 45 lf/gal.
1/8 x 2" = 75 lf/gal.	3/16 x 2" = 50 lf/gal.	1/4 x 2" = 40 lf/gal.

## Wider Joints and Cracks

3/8 x 3/8" = 135 lf/gal.	3/4 x 1/2" = 50 lf/gal.	1 x 3/4" = 25 lf/gal.
3/8 x 1/2" = 100 lf/gal.	3/4 x 3/4" = 35 lf/gal.	1 x 1" = 20 lf/gal.
1/2 x 1/2" = 80 lf/gal.	1 x 1/2" = 40 lf/gal.	1 x 2" = 10 lf/gal.

### Converting Gallon Coverage Rates for Cartridge Units

To determine coverage rates for cartridge units divide the gallon rates listed above by the following factors:

450 ML Divide Gal. Yield by 8

900 ML Divide Gal. Yield by 4

600 ML Divide Gal. Yield by 6

1500 ML Divide Gal. Yield by 2.5

250 ML Divide Gal. Yield by 15

### Sand Modification Yields

### Defect Repair Yields

#### Liquid Epoxy + Silica Sand = Mortar Yield

GAL. EPOXY + GALS. SAND = GALS. MORTAR

1	1	1.6
1	1.5	1.9
1	2	2.2
1	2.5	2.5
1	3	2.8

#### Standard Material Kit and Cartridge Units

UNIT SIZE	NET MATERIAL YIELD
250 ML UNIT	16.50 cubic inches
450 ML UNIT	28.75 cubic inches
600 ML UNIT	38.34 cubic inches
900 ML UNIT	57.50 cubic inches
1500 ML UNIT	98.83 cubic inches
GALLON UNIT	230.00 cubic inches

Note: The above figures are approximate industry standards for coverage and are for estimating purposes only. The rates shown do not allow for substantial waste, overfill, etc. Results may vary due to many factors including material loss at joint base, amount of material overfill, etc. Metzger/McGuire assumes no liability for results from using these figures.



**METZGER/McGUIRE**  
INDUSTRY STANDARD INDUSTRIAL FLOOR JOINT FILLERS & REPAIR PRODUCTS

**800.223.MM80**

[www.metzgermcguire.com](http://www.metzgermcguire.com)

Headquarters: P.O. Box 2217 Concord, NH 03302

Fax: 603.224.6020 E-Mail: [info@metzgermcguire.com](mailto:info@metzgermcguire.com)

Regional Offices: Atlanta - St. Louis - Denver - Portland