

RANDOM CRACKS

1/8" Width or Less

Difficulty Of Repair



REPAIR MATERIAL OPTIONS

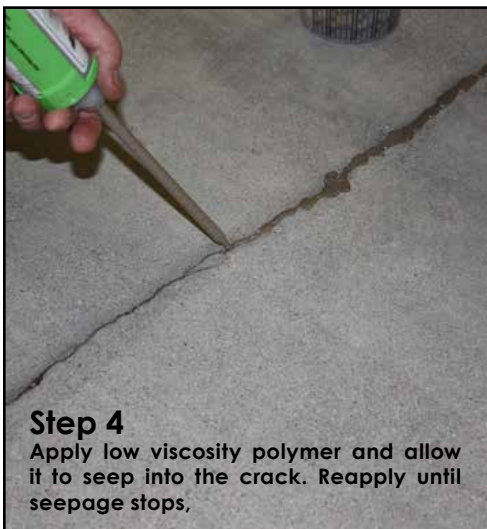
Low Viscosity Structural Repair Polymer
Rapid Refloor (I, D)
Rapid Refloor XP (I, D)
SRG (D)
Freezer/Cooler
Rapid Refloor (I, D)

TOOLS & EQUIPMENT NEEDED

Preferred:
Drill with Nyalox wheel, Medium grit grinding pad, Vacuum

Minimal:
Wire Brush, Vacuum

If a crack is approximately 1/8" wide or less, we recommend not to rout the crack wider.



(I) = Industrial (D) = Decorative

RANDOM CRACKS

1/8 - 1" Wide

Difficulty Of Repair



REPAIR MATERIAL OPTIONS


Semi-Rigid Epoxy or Polyurea Filler
MM-80/MM-80P (I)
(Neat or Sand Modified)
Spal-Pro 2000 (I)
Edge-Pro 90 (I)
RS-88 (I/D)
EP-80 (D)
RS-65 (D)

Freezer/Cooler
Spal-Pro 2000 or RSF (I)

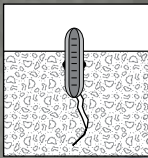
TOOLS & EQUIPMENT NEEDED

Preferred:
Right angle grinder, with dustless shroud,
Crack chasing saw, Diamond blades "U" or
"V" shaped, Vacuum system, Razor scraper /
heat (**MM-80/MM-80P**)


Minimal:
Right angle grinder, Diamond blades "U" or
"V" shaped, shop vacuum, Razor scraper /
heat (**MM-80/MM-80P**)



Step 1
Use a right angle grinder with a diamond "U" or "V" blade to rout out crack to a depth of 1/2" minimum, (3/4" preferred) creating a vertical edge. Be sure that remaining concrete along edge is structurally sound.



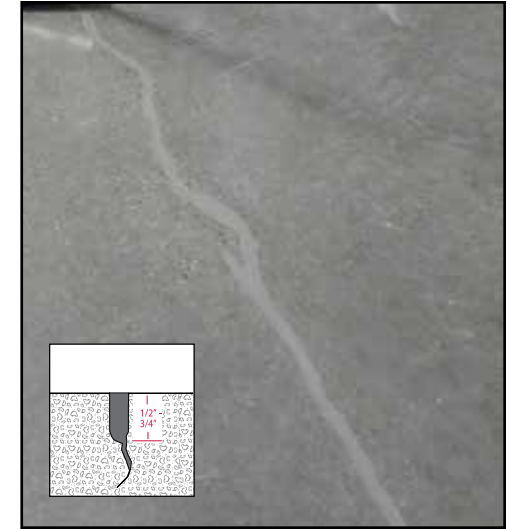
Step 2
Clean out any remaining debris or loose elements. Vacuum thoroughly.



Step 3
Apply joint filler and allow to seep into the crack. Reapply until seepage stops.



Step 4
Allow to cure. Razor off excess. (If using neat MM-80/MM-80P, apply heat prior to shaving). Grind flush if using sand modified MM-80/MM-80P.



(I) = Industrial (D) = Decorative