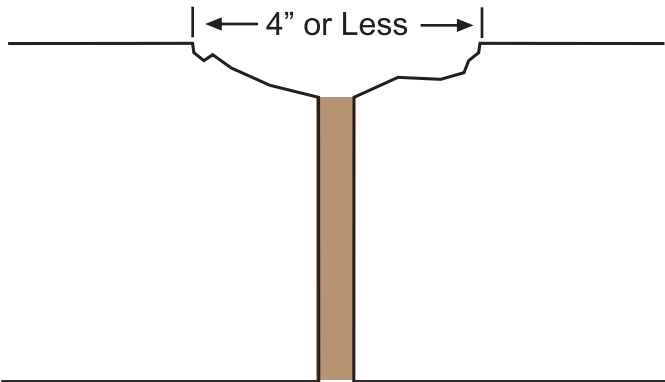
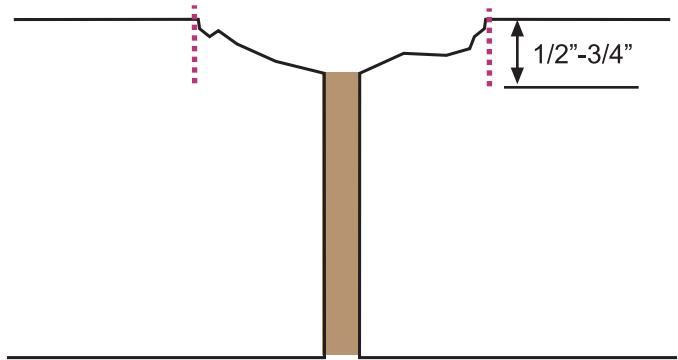


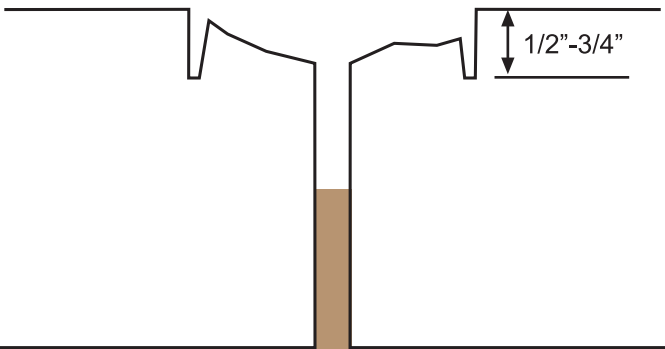
## FLOOR REPAIR DETAIL: Spalled Joint Repair (Severe Up to 4" in Width) Using Silica-Modified MM-80



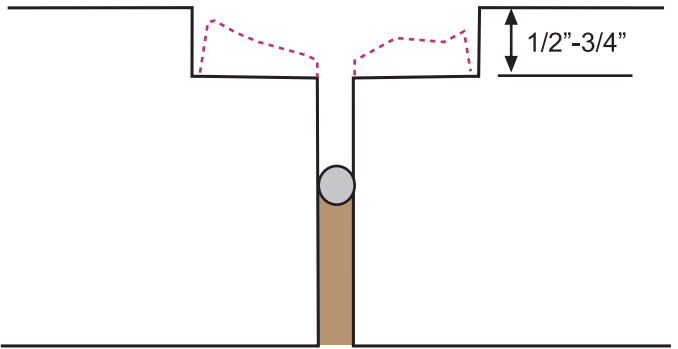
**Existing Condition** - severe joint spalling on both sides of the joint, up to 4" in width



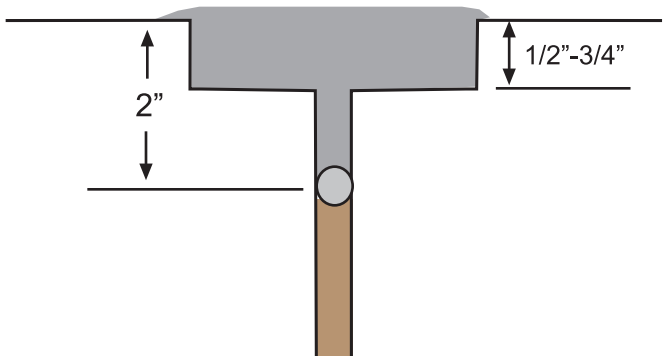
**Step 1** - Saw cut straight down 1/2" (minimum) to 3/4" (preferred) deep behind spalled edges using concrete saw (preferably dustless) equipped with diamond cutting blade.



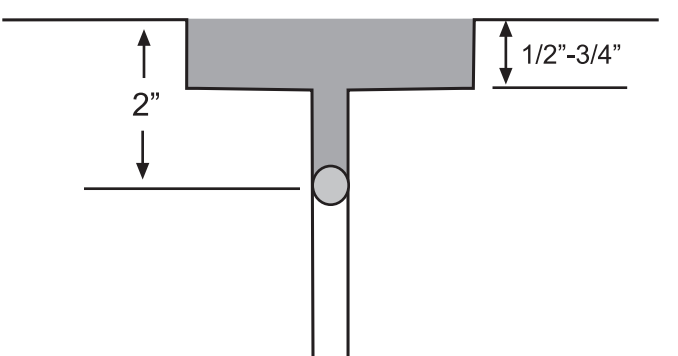
**Step 2** - Clean original joint to depth of original saw cut or 2" for thru-slab joint or to original saw cut joint depth. (Thru-slab joint shown).



**Step 3** - Remove any high spots between new saw cut edges and existing joint with chisel or similar tool to establish shelf. Vacuum clean. Place backer rod in compression at 2" deep or depth of saw cut if material loss is a concern.



**Step 4** - Slightly overfill newly created channel with sand modified MM-80 Epoxy Joint Filler. To make mortar, mix MM-80 neat for 2-3 minutes then add clean, dry silica sand gradually 1/2 gallon at a time up to a maximum of 2 parts silica to 1 part epoxy.



**Step 5** - After MM-80 cures into solid (approx. 6-8 hours at 70F) grind off overfill until mortar is flush with floor surface using ZEC pad or similar grinding disc.