

600 ML (300x300) Dual-Cartridge Kit

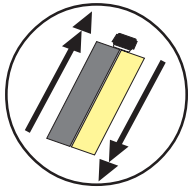
**IMPORTANT INSTRUCTIONS  
 PLEASE READ BEFORE USE**  
 CARTRIDGE SHOULD BE STORED AT OR CONDITIONED TO  
 65°F - 75°F PRIOR TO USE FOR BEST RESULTS

For most consistent mix, dispense with *Albion B26 T600* or similar 26:1 thrust ratio dispensing gun. Lower thrust ratios can lead to less consistent results.

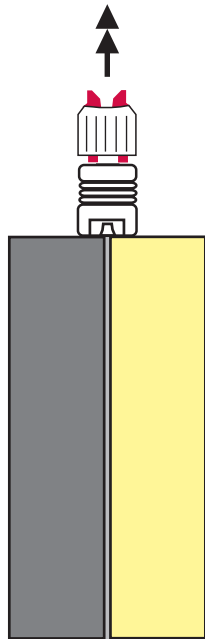
**INSTRUCTIONS FOR USING CARTRIDGE UNIT**

**1**

SHAKE WELL BEFORE USE (45 seconds+)



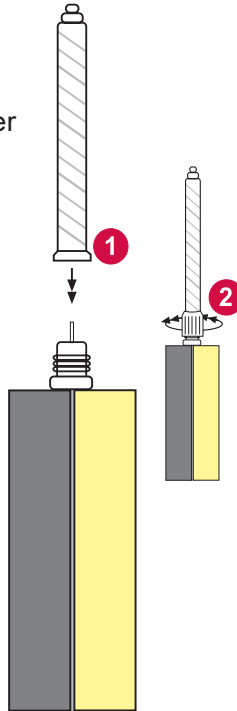
Unscrew lock nut and pull plug out



**2**

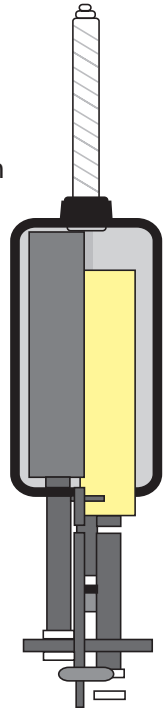
Place static mixer onto neck of cartridge.

Screw lock nut over mixer and secure tightly



**3**

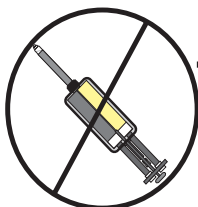
Pull back pistons in gun and securely load cartridge in cradle



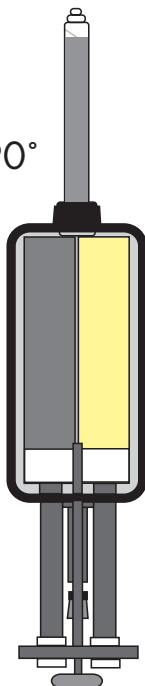
**4**

**IMPORTANT!**

Hold Gun straight up at a 90° angle and slowly pull trigger to purge air from unit. Drive material to top of mixer.



90°



**5**

Tilt gun down and squeeze first 3-4 shots of material into a disposable cup, etc. until color appears to be consistent.

**IMPORTANT!**

Gun should remain tilted down whenever dispensing or when cartridge is being used - do not tilt gun up during use as partially mixed material may run back into cartridge!

