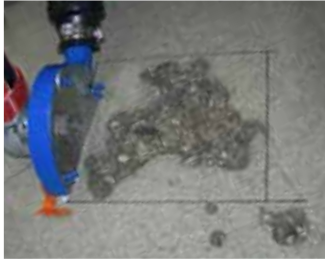


# SURFACE SPALLS/DEFECTS - Larger than 6"



## REPAIR MATERIAL

**Structural Epoxy Mortar**  
**Armor-Hard**

**Rapid Access**  
**Armor-Hard Extreme**

**Freezer/Cooler**  
**Spal-Pro 2000 or AH Extreme**

## TOOLS & EQUIPMENT NEEDED

### Preferred:

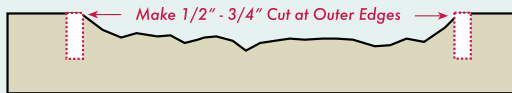
Right angle grinder with dustless shroud, Diamond blades, Zec® / Grinding Pads, Vacuum system, Razor scraper

### Minimal:

3 lb. hammer, Cold chisel, Shop vacuum, Trowel, Razor scraper / torch

## STEP 1

Make cuts with blade or chip out section at outer edges of spalling, 1/2" deep (minimum) to 3/4" deep (preferred). Creating a vertical edge.



## STEP 2

Chip or grind out any high spots above level of cuts. Vacuum/brush area clean. If oils/debris present solvent wipe with rag.



## STEP 3

Slightly overfill area with repair material and trowel smooth, slightly high.

*Slightly Overfill with Repair Material (Trowel if Mortar)*



## STEP 4

Remove overfill to create smooth, flush surface by grinding flush with Zec® pad or similar.

*Grind/Razor Off Overfill Material After Full Cure*



## DIFFICULTY



Ex. Prepared area



Ex. Finished area