



ENROLL TODAY (866) 984-3080

Who should attend Polished Concrete University?

Installation contractors, concrete polishing contractors, architects/engineers, general contractors, facility owners – basically anyone interested in learning more about the proper preparation and installation of concrete floor joint fillers and repair products, both for industrial and stained/polished concrete floors.

Why should you plan to attend Polished Concrete University?

Polished Concrete University in conjunction with Metzger/McGuire Co. was established to provide hands-on and classroom training on all aspects of concrete joint filling and repair including optimal use of Metzger/McGuire products, typical jobsite conditions, best practices and equipment for preparing and finishing joints and floor defect repairs and much, much more. During the course many aspects of a typical joint filling or repair project are covered including bidding and planning, handling variable jobsite conditions, troubleshooting concrete floors, and more. Whether you are new to the industry, have new personnel to train, or would just like a refresher and exposure to new products or techniques, we guarantee you will leave Polished Concrete University with new knowledge that can help you improve the efficiency and quality of your concrete joint filling and floor repair work.

Polished Concrete University graduates will receive a certification card and are eligible for any of the individual manufacturer certification cards required by many national specifications to do work on retail and other concrete repair joint filling projects. The number of employees a company has with certification cards can also be an important factor in helping a company achieve *Metzger McGuire Approved Applicator* or *Approved Repair Contractor Status*.

DETAILED INSTRUCTION IN ALL ASPECTS OF JOINT AND JOINT FILLING INCLUDING:

- Selecting the Proper Filler
- Proper Joint Cleaning
- Dispensing Methods/Tools
- Proper Joint Filling and Finishing Techniques
- Handling Jobsite Variables, Conditions, and More!

HANDS-ON TRAINING IN THE BEST CONCRETE REPAIR METHODS INCLUDING:

- Joints
- Structural Joint Rebuild
- Random Cracks
- Surface Gouges and Defects
- Delamination/Resurfacing and More!



For more information on attending the
Polished Concrete University,
visit www.polishedconcreteuniversity.com
or Email:
robert@polishedconcreteuniversity.com
Phone: 800-659-5843

TYPICAL AGENDA



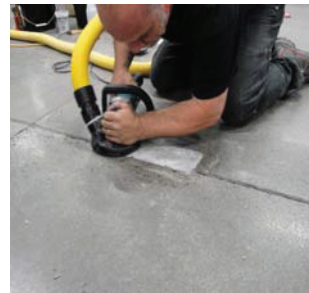
ENROLL TODAY (866) 984-3080

DAY 1:

| | |
|----------------|---|
| 8:15-9:00 am | Arrival/Registration/Coffee & Donuts |
| 9:00-9:15 am | Introductions |
| 9:15-10:45 am | Classroom “Industrial Joint Filling and Repair” “Project Considerations” |
| 10:45-11:00 am | Break/Phone Calls |
| 11:00-12:00 pm | Workshop: Intro to Preparation/Repair Equipment |
| 12:00-12:45 pm | Lunch |
| 12:45-3:00 pm | Hands on Workshop: Joint and Defect Preparation, Surface Protection, Joint Filling/Repair |
| 3:00-3:15 pm | Break/Phone Calls |
| 3:15-4:30 pm | Hands on Workshop: Finishing Operations. Joint Filling & Repair |
| 4:30-5:00 pm | Q&A, Day 1 Wrap Up, Day 2 Preview |
| 6:30 pm | Meet in Lobby, Departure for Dinner. Hosted by Metzger/McGuire |

DAY 2

| | |
|----------------|---|
| 8:15-8:30 am | Coffee/Donuts |
| 8:30-10:00 am | Hands on Workshop: “Repair Finishing Operations” |
| 10:00-10:15 am | Break/Phone Calls |
| 10:15-11:15 am | Classroom “Stained/Polished Concrete Floor Joint Filling and Repairs” |
| 11:15-12:00 pm | Lunch |
| 12:00-2:00 pm | Hands on Workshop: “Decorative Joint Filling and Surface Repair” |
| 2:00-3:00 pm | Summary, Q&A and Wrap Up |
| 3:00 pm | Departures |



DURING THE ACADEMY YOU WILL LEARN:

- All aspects of floor joint filling in both industrial and stained/polished concrete floors
- All aspects of floor joint repair from the repair of minor edge spalling or routine joint maintenance to complete joint edge rebuilding and joint restoration
- Identification, material selection and repair methods for different types of cracks
- Material selection and repair methods for surface defects like pop-outs, spalls and micro-pitting
- How to identify potential joint or surface problems in new concrete floors
- How to troubleshoot post-installation issues which can result from floor factors beyond the installer's control
- Best equipment options to tackle joint filling and repair operations.
- Proper sequencing of repair and/or joint filling operations on stained/polished concrete floor projects; how to handle these operations after the fact
- How to adjust for project conditions which can adversely impact material finishing
- Proper installation and finishing techniques for Metzger/McGuire materials, including:
 - **MM-80 Heavy Duty, Semi-Rigid Epoxy Joint Filler**
 - **Spal-Pro RS 88 Semi-Rigid Polyurea Joint Filler**
 - **SPF Stain Prevention Film**
 - **Spal-Pro 2000 Rapid Set Polyurea Repair Polymer**
 - **Armor Hard Extreme Structural Epoxy Repair Mortar**
 - **Rapid Refloor Structural Concrete Repair Product**
 - **RR Pit Grout Rapid Set Surface Restoration Polymer**

Class size is limited to 24 attendees to ensure personalized attention and hands on opportunities.